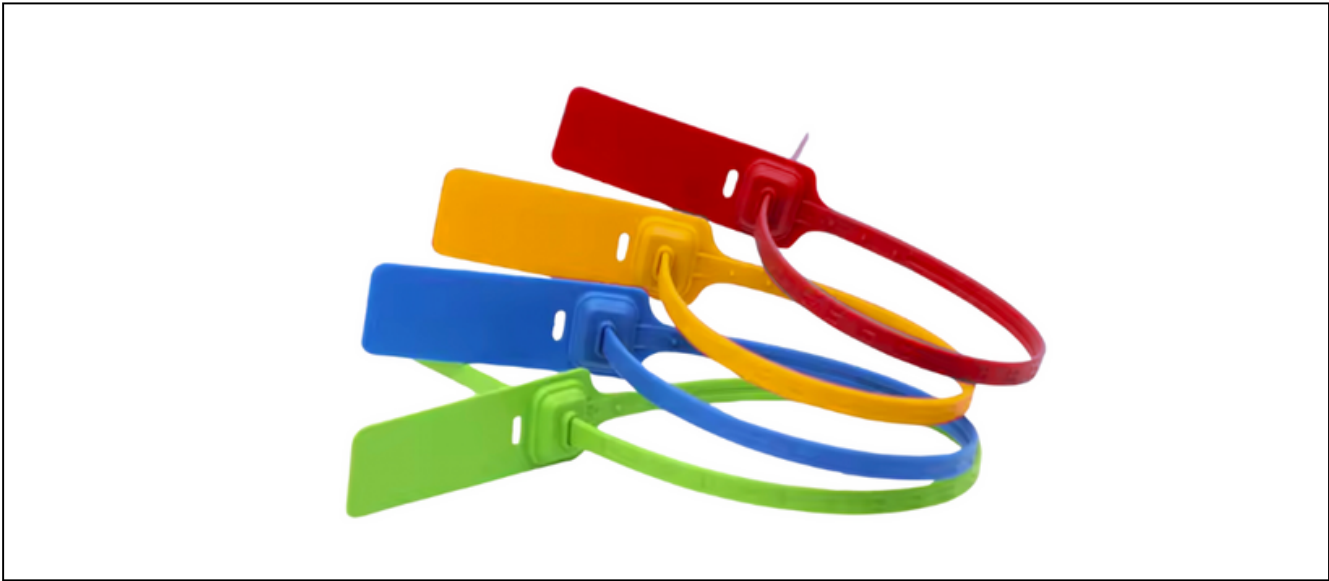


Nylon Cable Tie Lockout



Model	Description	Material
030.137	Nylon Lockout Cable 3mm Width, 280mm Length, Red	Nylon
030.138	Nylon Lockout Cable 3mm Width, 280mm Length, Yellow	Nylon
030.139	Nylon Lockout Cable 3mm Width, 280mm Length, Green	Nylon
030.140	Nylon Lockout Cable 3mm Width, 280mm Length, Blue	Nylon

Features	Material
<ul style="list-style-type: none">Self-locking and tamper-evident design for secure lockout applicationsIdeal for securing valves, switches, and other equipment during lockout proceduresColor-coded for easy identification (red, yellow, green, blue).Lightweight and easy to use, with a strong tensile strength.	<ul style="list-style-type: none">Made from durable nylon, resistant to wear and environmental conditions
Temperature Range	Dimensions
<ul style="list-style-type: none">Temperature range from -20°C to 140°C (-68°F to 284°F)	<ul style="list-style-type: none">Shackle Diameter: L:1000mm, D:4mmBody size: 76.5mm*42mm*21mm

NOTE: Please note that the values presented in this document are averages and are not intended to be used for specification purposes. The test data and results contained herein are provided for general information only and should not be relied upon by our customers for designing and specifying products or meeting specific performance criteria. We encourage customers who wish to establish specifications or performance criteria for particular product applications to contact us for further information and assistance.