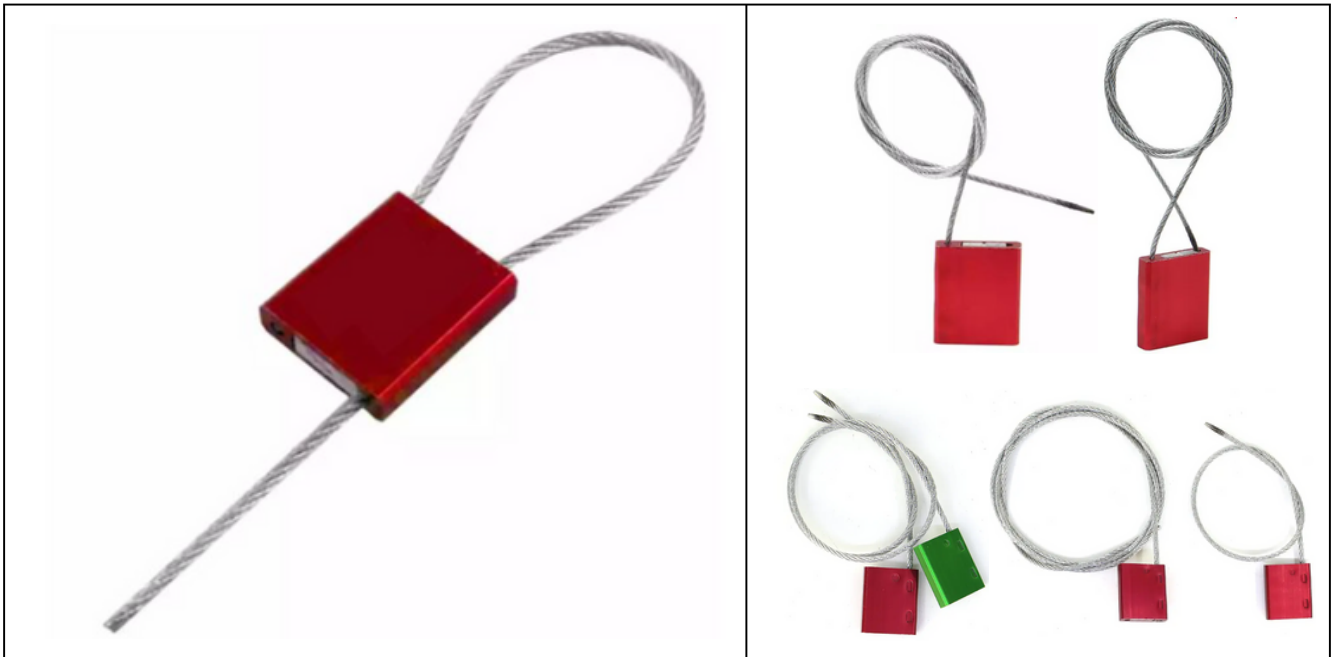


### Security Seal Lockout:



Model	Description	Material
030.126	Cable diameter 2.5mm, length 256mm	Aluminum Lock Body With Steel Wire
030.128	Cable diameter 2.5mm, length 1000mm	

Dimensions	Features
<ul style="list-style-type: none"> <li>• Cable diameter: 2.5mm, Flag: 27mm X 27mm X 10mm.</li> <li>• b) Cable length: 250mm, length available.</li> </ul>	<ul style="list-style-type: none"> <li>• Ideal for long term uses, each car seal is self locking. The only way to remove it is by cutting after the cable passed through the body.</li> <li>• All car seals are laser print with individually numbering.</li> <li>• The length of the cable can be customized.</li> <li>• Colors : red yellow, green and blue.</li> </ul>
Temperature Range	Material
<ul style="list-style-type: none"> <li>• Operating Temperature: -40°C to 110°C / -40°F to 230°F.</li> </ul>	<ul style="list-style-type: none"> <li>• Made from Aluminum alloy body, with galvanized cable</li> </ul>

**NOTE:** Please note that the values presented in this document are averages and are not intended to be used for specification purposes. The test data and results contained herein are provided for general information only and should not be relied upon by our customers for designing and specifying products or meeting specific performance criteria. We encourage customers who wish to establish specifications or performance criteria for particular product applications to contact us for further information and assistance.